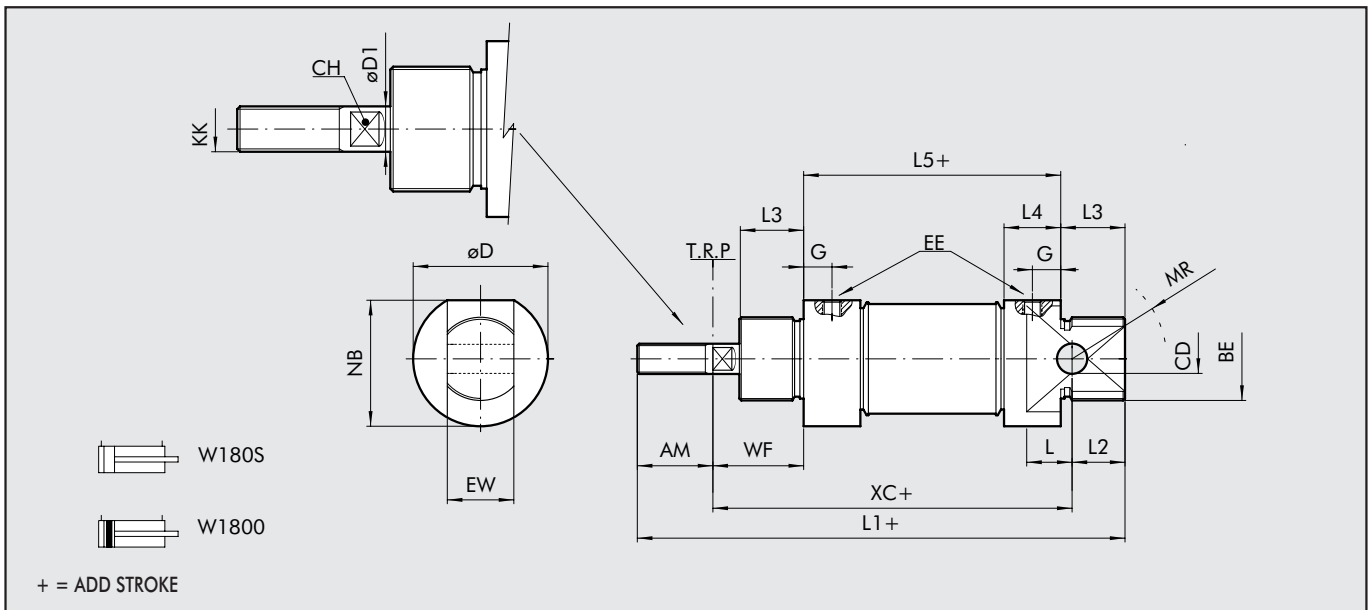
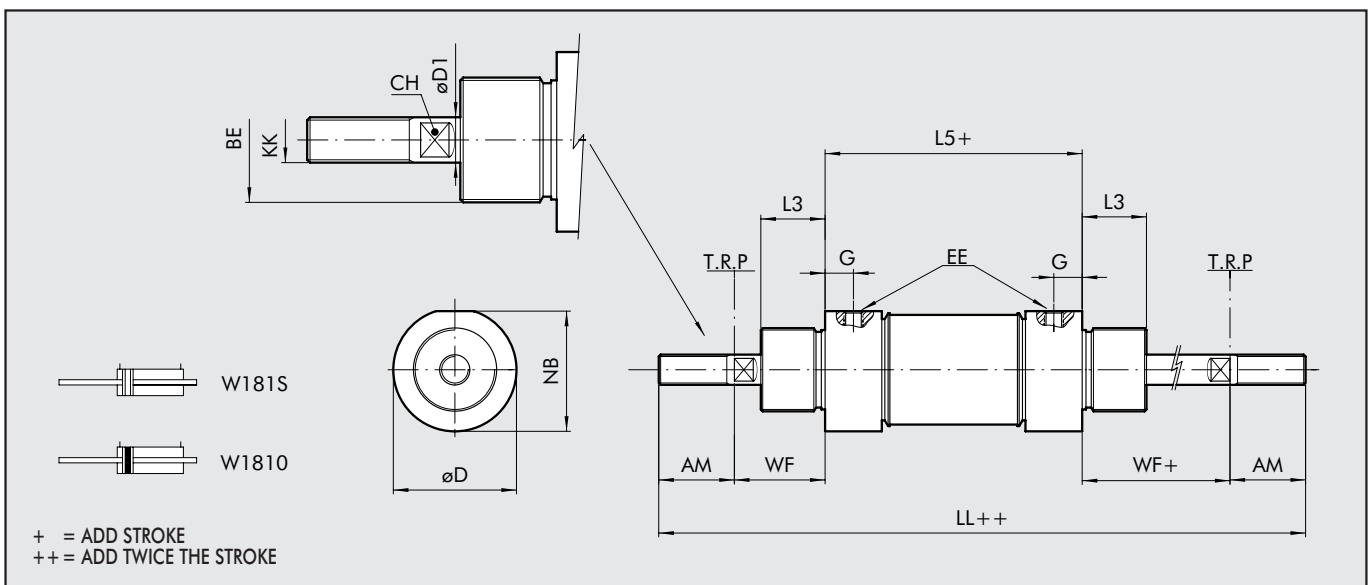


## DIMENSIONS OF DOUBLE-ACTING



Ø	AM	BE	øCD (H9)	C	H	øD	øD1	EE	EW (d13)	G	KK	L	L1	L2	L3	L5	MR	NB	WF	XC
16	16	M16x1,5	6	5	19	6	M5	12	5	M6	9	109	11	18	55	16	18	22	82	
20	20	M22x1,5	8	7	27	8	G 1/8	16	8	M8	12	131	16	20	67	18	25,5	24	95	
25	22	M22x1,5	8	9	30	10	G 1/8	16	8	M10x1,25	12	140	14	22	68	21	28,5	28	104	

## DIMENSIONS DOUBLE-ACTING THROUGH-ROD



Ø	AM	BE	CH	øD	øD1	EE	G	KK	LL	L3	L5	NB	WF (±1,2)
16	16	M16x1,5	5	19	6	M5	5	M6	129,5	18	55	18	22
20	20	M22x1,5	7	27	8	G 1/8	8	M8	156	20	67	25,5	24
25	22	M22x1,5	9	30	10	G 1/8	8	M10x1,25	169	22	68	28,5	28

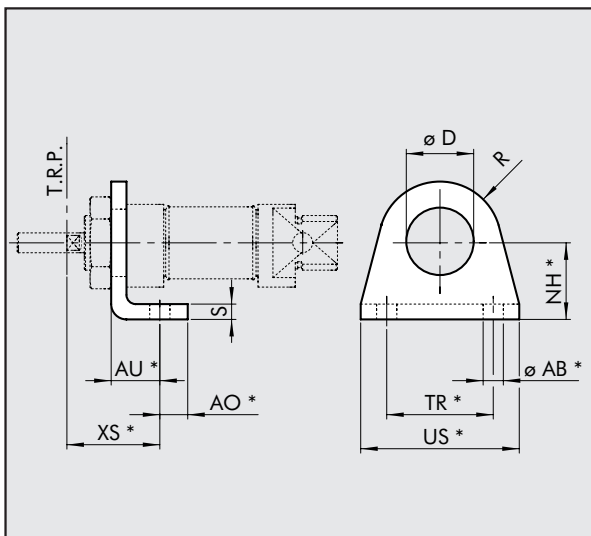
### KEY TO CODES

W 1 8	0	0	1 6	0 0 2 0
	TYPE	VERSION	DIAMETER	STROKE
Stainless steel cylinder	0 DEM 1 DEM through-rod	0 Standard (magnetic) S Not magnetic V Viton® gasket I Longer piston rod	16 20 25	Ø 16÷25 stroke 0÷500 mm

DEM: Magnetic double-acting (non-cushioned)

## ACCESSORIES: FIXINGS

### STAINLESS STEEL LEG MODEL A

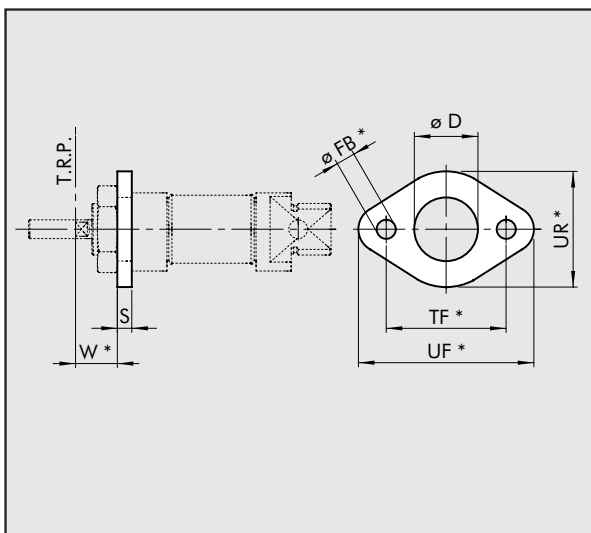


Code	Ø	ØAB	AU	AO	D	NH	XS (±1.4)	R	S	TR	US	Weight [g]
W095X120001	16	5,5	14	6	16,1	20	22	13	4	32	42	42
W095X200001	20	6,6	17	8	22,1	25	36	20	5	40	54	90
W095X200001	25	6,6	17	8	22,1	25	40	20	5	40	54	90

\*ISO 6432 values

Note: Individually packed

### STAINLESS STEEL FLANGE MODEL C



Code	Ø	D	FB	W (±1.4)	S	TF	UF	UR	Weight [g]
W095X120002	16	16	5.5	18	4	40	52	30	26
W095X200002	20	22	6.6	19	5	50	66	40	52
W095X200002	25	22	6.6	23	5	50	66	40	52

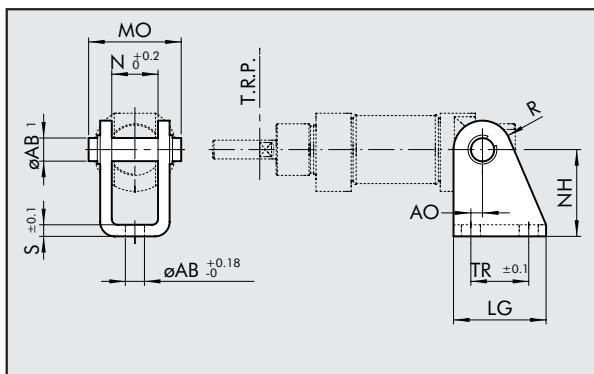
\*ISO 6432 values

Note: Individually packed



### STAINLESS STEEL COUNTER-HINGE MODEL BC

Code	Ø	AB1	AB	AO	LG	MO	N	NH	R	S	TR	Weight [g]
------	---	-----	----	----	----	----	---	----	---	---	----	------------

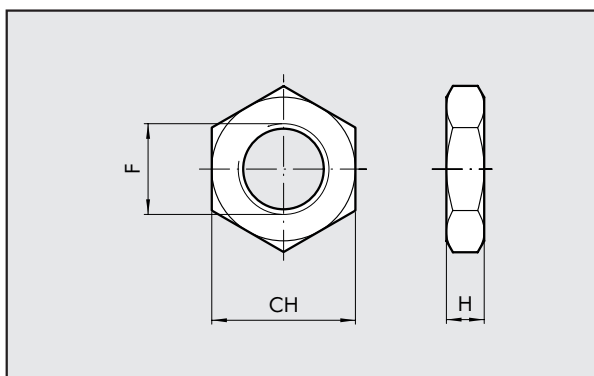


W095X120005	16	6	5.5	2	25	24	12.1	27	7	3	15	40
W095X200005	20	8	6.6	4	32	31	16.1	30	10	4	20	78
W095X200005	25	8	6.6	4	32	31	16.1	30	10	4	20	78

Note: Supplied complete with 1 pin and 2 snap rings

### STAINLESS STEEL NUT FOR HEADS

Code	Ø	CH	F	H
------	---	----	---	---

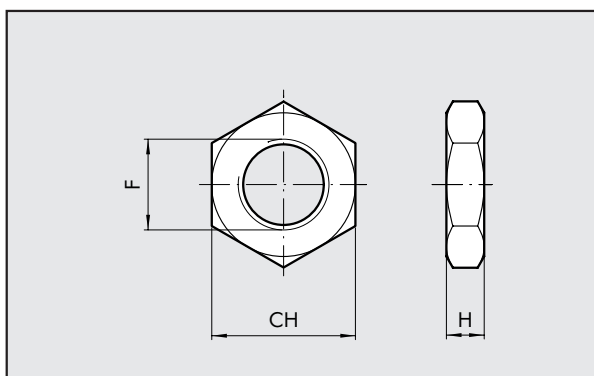


W095X120010	16	22	M16x1.5	5
W095X200010	20	27	M22x1.5	8
W095X200010	25	27	M22x1.5	8

Note: Individually packed

### STAINLESS STEEL NUT FOR PISTON RODS

Code	Ø	CH	F	H	Weight [g]
------	---	----	---	---	------------

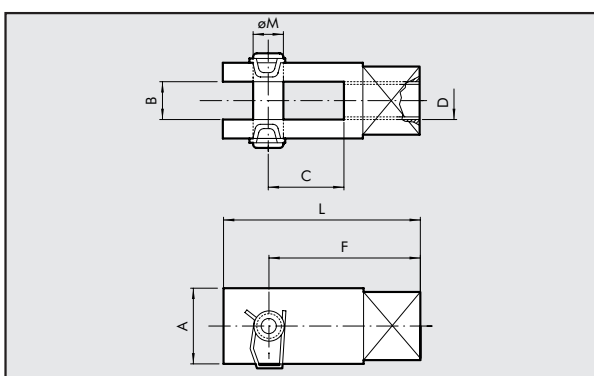


W095X120011	16	10	M6	4	1
W095X200011	20	13	M8	5	3
W095X322011	25	17	M10x1.25	6	7

Note: Individually packed

### STAINLESS STEEL FORK-MODEL GK-M

Code	Ø	A	B	C	D	F	L	Ø M
------	---	---	---	---	---	---	---	-----

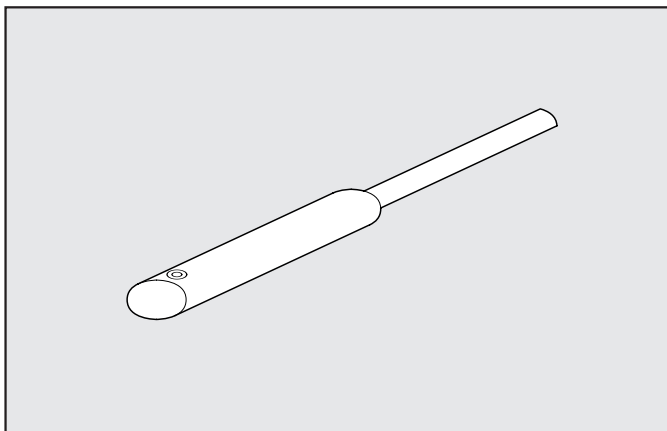


W095X120020	16	12	6	12	M6	24	31	6
W095X200020	20	16	8	16	M8	32	42	8
W095X322020	25	20	10	20	M10x1.25	40	52	10

Note: Individually packed

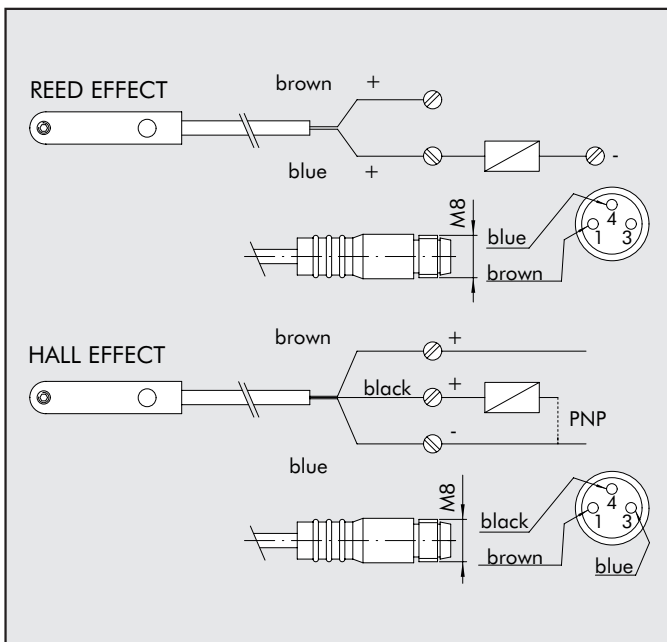
## ACCESSORIES: MAGNETIC SENSORS

### SLIM SENSOR



Code	Description
W0952025390	HALL SENSOR, VERTICAL INSERTION 2.5m
W0952029394	HALL SENSOR, VERTICAL INSERTION 300 mm M8
W0952022180	REED SENSOR, VERTICAL INSERTION 2.5m
W0952028184	REED SENSOR, VERTICAL INSERTION 300 mm M8

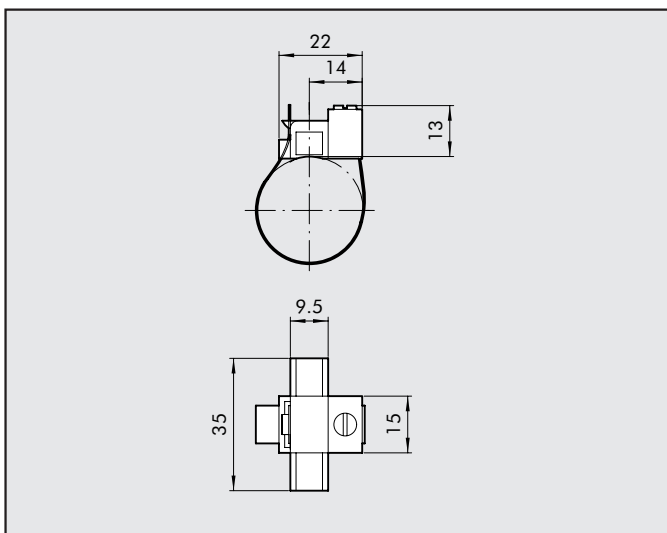
### WIRING DIAGRAM



### TECHNICAL DATA

	Reed	Effetto Hall
Type of contact	N.O.	N.O.
Switch	-	PNP
Supply voltage (Ub)	V 10 ÷ 30 AC/DC	10 ÷ 30 DC
Power	W 3 (peak valve=6)	3
Voltage variation	-	≤ 10% di Ub
Voltage drop	V -	≤ 2
Input current	mA -	≤ 10
Output current	mA ≤ 100	≤ 100
Switching frequency	Hz ≤ 400	≤ 5
Short-circuit protection	-	Yes
Over-voltage suppression	-	Yes
Polarity inversion protection	-	Yes
EMC	EN 60 947-5-2	EN 60 947-5-2
LED display	Yellow	Yellow
Magnetic sensitivity	2,8 mT ±25%	2,8 mT ±25%
Repeatability	≤ 0,1 mT	≤ 0,1 mT
Degree of protection (EN 60529)	IP 67	IP 67
Vibration and shock resistance	30 g, 11 ms, 10÷55 Hz, 1mm	30 g, 11 ms, 10÷55 Hz, 1mm
Temperature range	°C -25 ÷ +75	-25 ÷ +75
Sensor capsule material	PA66 + PA6I/6T	PA66 + PA6I/6T
2.5m connecting cable	PVC; 2 x 0,12 mm <sup>2</sup>	PVC; 3 x 0,14 mm <sup>2</sup>
Connecting cable with M8x1	Polyurethane; 2 x 0,14 mm <sup>2</sup>	Polyurethane; 3 x 0,14 mm <sup>2</sup>

### SENSOR CIRCLIP



Codice	Alesaggio	Modello
W0950001103	8÷63	SENSOR CIRCLIP

Note: Individually packed

#### MATERIAL

Circlip: stainless steel  
Sensor holder: plastic