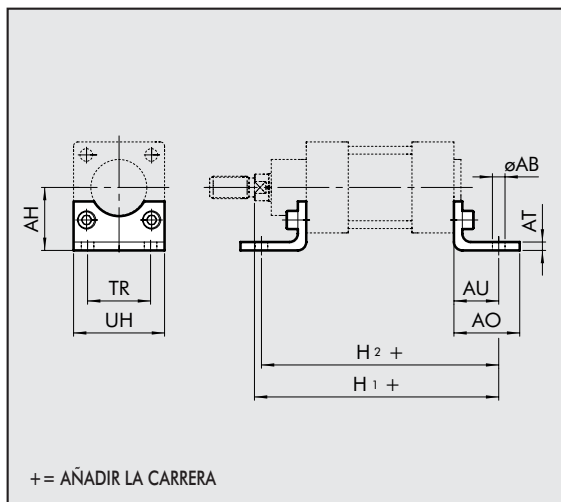


ACCESORIOS ISO 6431 STD Y TIPO "A", SENSOR INTEGRADO: FIJACIONES

PATAS - MOD. A

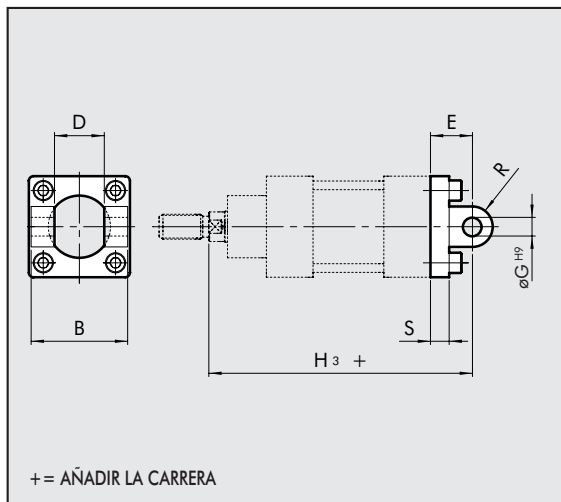


Códigos Ø Ø AB AH AO AT AU TR UH H₁ H₂ Peso [g]

W0950322001	32	7	32	35	4	24	32	45	144	142	76
W0950402001	40	9	36	43	4	28	36	52	163	161	100
W0950502001	50	9	45	47	4	32	45	65	175	170	162
W0950632001	63	9	50	47	6	32	50	75	190	185	266
W0950802001	80	12	63	61	6	41	63	95	215	210	456
W0951002001	100	14	71	66	6	41	75	115	230	220	572
W0951252001	125	16	90	60	7	45	90	140	270	250	1130

Nota: n. 1 pieza por confección completa de n. 2 tornillos

CHARNELA HEMBRA - MOD. B

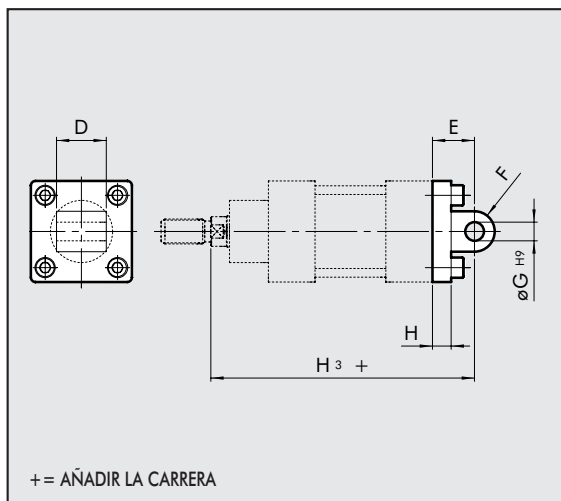


Códigos Ø B D E Ø G H₃ R S Peso [g]

W0950322003	32	45	26	22	10	142	11	10	116
W0950402003	40	52	28	25	12	160	13	10	160
W0950502003	50	60	32	27	12	170	13	12	252
W0950632003	63	70	40	32	16	190	17	12	394
W0950802003	80	90	50	36	16	210	17	16	670
W0951002003	100	110	60	41	20	230	21	16	1085
W0951252003	125	130	70	50	25	275	26	20	2000

Nota: servida completa de n. 4 tornillos, n. 4 arandela, n. 2 seeger, n. 1 pasador

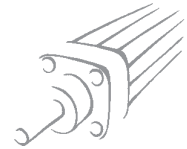
CHARNELA MACHO - MOD. BA



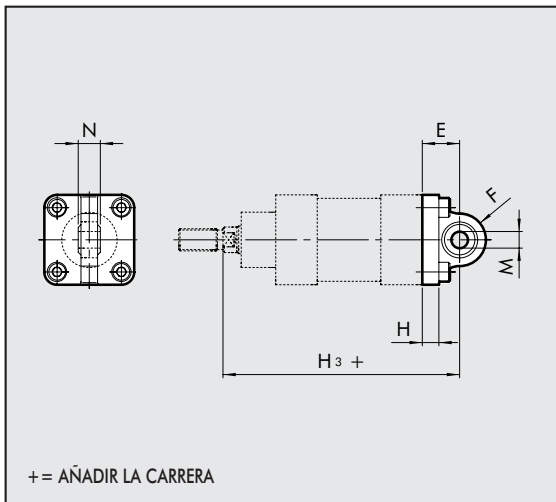
Códigos Ø D E F Ø G H H₃ Peso [g]

W0950322004	32	26	22	11	10	10	142	94
W0950402004	40	28	25	13	12	10	160	124
W0950502004	50	32	27	13	12	12	170	220
W0950632004	63	40	32	17	16	12	190	316
W0950802004	80	50	36	17	16	16	210	578
W0951002004	100	60	41	21	20	16	230	850
W0951252004	125	70	50	26	25	20	275	1590

Nota: servida completa de n. 4 tornillos, n. 4 arandela



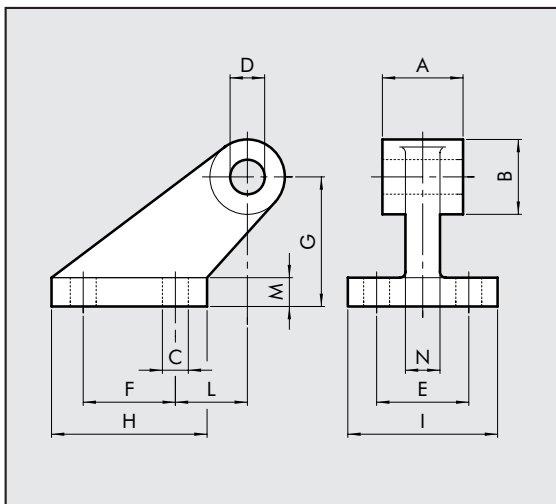
CHARNELA MACHO CON ROTULA - MOD. BAS



Códigos	Ø cil.	E	F	H	H ₃	M	N	Peso [g]
W0950322006	32	22	16	10	142	10	14	106
W0950402006	40	25	19	10	160	12	16	142
W0950502006	50	27	19	12	170	12	16	236
W0950632006	63	32	24	12	190	16	21	336
W0950802006	80	36	24	16	210	16	21	572
W0951002006	100	41	30	16	230	20	25	840
W0951252006	125	50	36	20	275	25	31	1520

Nota: servida completa de n. 4 tornillos, n. 4 arandela

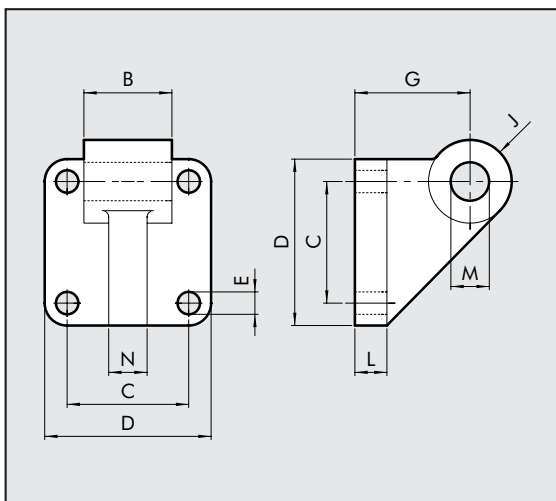
CONTRACHARNELA "CETOP" PARA MOD. B - MOD. GL



Códigos	Ø	A	B	C	D	E	F	G	H	I	L	M	N	Peso [g]
W0950322008	32	26	19	7	10	25	20	32	37	41	18	8	10	96
W0950402008	40	28	26	9	12	32	32	45	54	52	25	10	12	216
W0950502008	50	32	26	9	12	32	32	45	54	52	25	10	12	212
W0950632008	63	40	33	11	16	40	50	63	75	63	32	12	15	440
W0950802008	80	50	33	11	16	40	50	63	75	63	32	12	15	464
W0951002008	100	60	44	14	20	50	70	90	103	80	40	16	22	985
W0951252008	125	70	44	14	25	50	70	90	103	80	40	16	22	1000

Nota: servida completa de n. 4 tornillos, n. 4 arandela

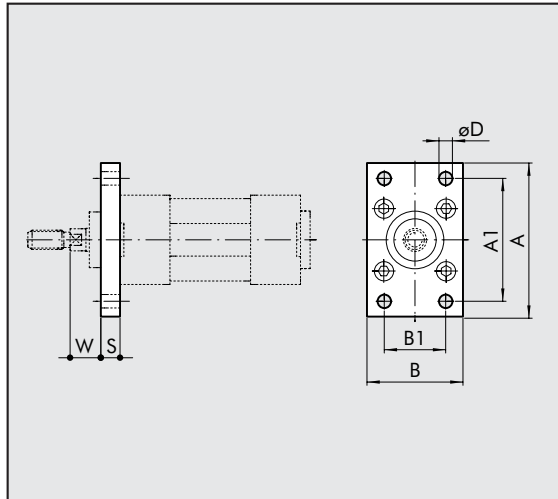
CONTRACHARNELA ISO PARA MOD. B - MOD. GS



Códigos	Ø	B	C	D	E	G	J	L	M	N	Peso [g]
W0950322108	32	25.5	32.5	45	7	32	11	10	10	10	106
W0950402108	40	27.5	38	52	7	36	13	10	12	12	138
W0950502108	50	31.5	46.5	65	9	45	13	12	12	12	252
W0950632108	63	39.5	56.5	75	9	50	17	12	16	15	350
W0950802108	80	49.5	72	95	11	63	17	16	16	15	655
W0951002108	100	59.5	89	115	11	73	21	16	20	22	980

Nota: servida completa de n. 4 tornillos, n. 4 arandela

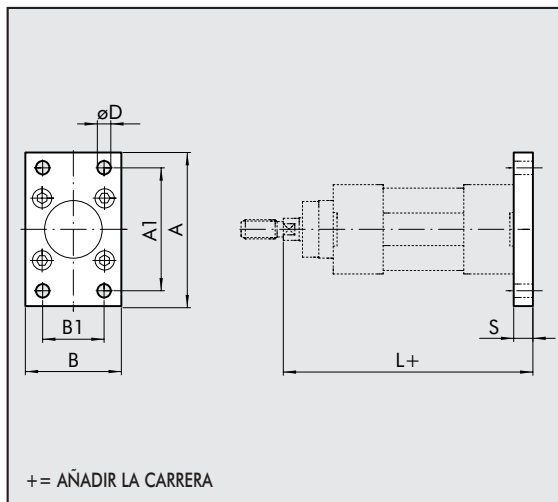
BRIDA ANTERIOR - MOD. C



Códigos	Ø	A ₁	A	B	S	B ₁	ØD ₄	W	Peso [g]
W0950322002	32	64	80	50	10	32	7	16	246
W0950402002	40	72	90	55	10	36	9	20	290
W0950502002	50	90	110	65	12	45	9	25	522
W0950632002	63	100	120	75	12	50	9	25	670
W0950802002	80	126	153	95	16	63	12	30	1420
W0951002002	100	150	178	115	16	75	14	35	2040
W0951252002	125	180	220	140	20	90	16	45	4300

Nota: servida completa de n. 4 tornillos

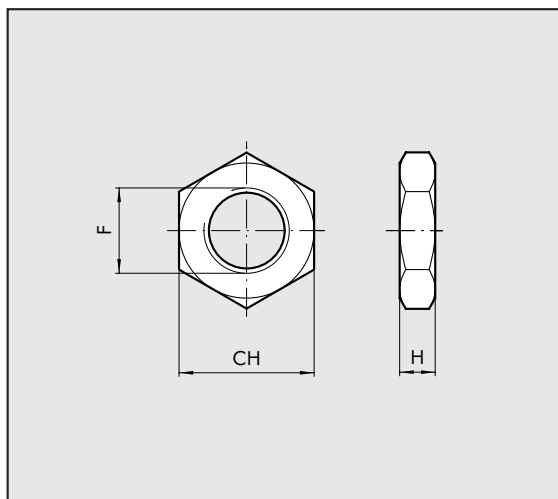
BRIDA POSTERIOR - MOD. C



Códigos	Ø	A ₁	A	B	S	B ₁	ØD ₄	L+carrera	Peso [g]
W0950322002	32	64	80	50	10	32	7	130	246
W0950402002	40	72	90	55	10	36	9	145	290
W0950502002	50	90	110	65	12	45	9	155	522
W0950632002	63	100	120	75	12	50	9	170	670
W0950802002	80	126	153	95	16	63	12	190	1420
W0951002002	100	150	178	115	16	75	14	205	2040
W0951252002	125	180	220	140	20	90	16	245	4300

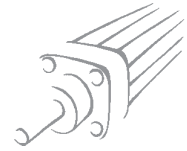
Nota: servida completa de n. 4 tornillos

TUERCA PARA VÁSTAGO - MOD. S

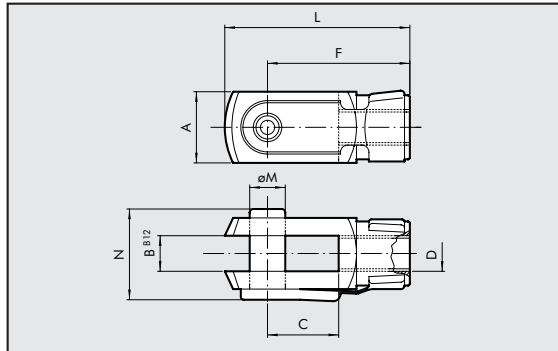


Códigos	Ø	F	H	CH	Peso [g]
0950322010	32	M10x1.25	6	17	6
0950402010	40	M12x1.25	7	19	12
0950502010	50/63	M16x1.5	8	24	20
0950802010	80/100	M20x1.5	9	30	32
0951252010	125	M27x2	12	41	74

Nota: n. 1 pieza por confección



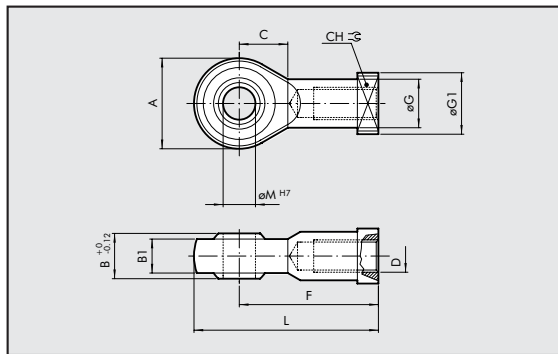
HORQUILLA MOD. GK-M



Códigos	Ø	Ø M	C	B	A	L	F	D	N	Peso [g]
W0950322020	32	10	20	10	20	52	40	M10x1.25	26	92
W0950402020	40	12	24	12	24	62	48	M12x1.25	32	148
W0950502020	50	16	32	16	32	83	64	M16x1.5	40	340
W0950502020	63	16	32	16	32	83	64	M16x1.5	40	340
W0950802020	80	20	40	20	40	105	80	M20x1.5	40	690
W0950802020	100	20	40	20	40	105	80	M20x1.5	48	690
W0951252020	125	30	54	30	55	148	110	M27x2	65	1835

Nota: n. 1 pieza por confección

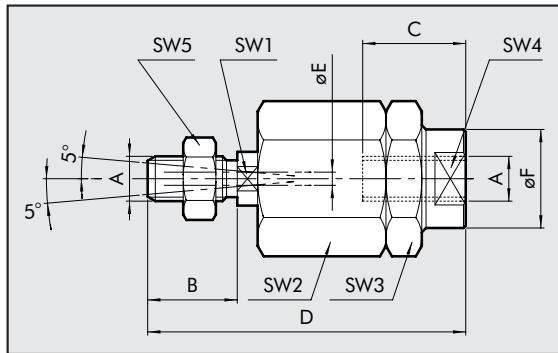
ROTULA - MOD. GA-M



Códigos	Ø	Ø M	C	B1	B	A	L	F	D	Ø G	CH	Ø G1	Peso [g]
W0950322025	32	10	15	10.5	14	28	57	43	M10x1.25	15	17	19	78
W0950402025	40	12	17	12	16	32	66	50	M12x1.25	17.5	19	19	116
W0950502025	50	16	22	15	21	42	85	64	M16x1.5	22	22	22	226
W0950502025	63	16	22	15	21	42	85	64	M16x1.5	22	22	22	226
W0950802025	80	20	26	18	25	50	102	77	M20x1.5	27.5	30	27	404
W0950802025	100	20	26	18	25	50	102	77	M20x1.5	27.5	30	27	404
W0951252025	125	30	36	25	37	70	145	110	M27x2	40	41	50	1190

Nota: n. 1 pieza por confección

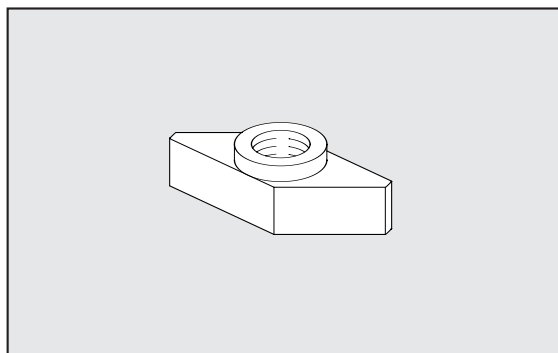
ROTULA AUTOALINEANTE - MOD. GA-K



Códigos	Ø	A	B	C	D	ØF	ØE	SW ₁	SW ₂	SW ₃	SW ₄	SW ₅	Peso [g]
W0950322030	32	M10x1.25	20	20	71	22	4	12	30	30	19	17	216
W0950402030	40	M12x1.25	24	20	75	22	4	12	30	30	19	19	220
W0950502030	50	M16x1.5	32	32	103	32	4	20	41	41	30	24	620
W0950502030	63	M16x1.5	32	32	103	32	4	20	41	41	30	24	620
W0950802030	80	M20x1.5	40	40	119	32	4	20	41	41	30	30	680
W0950802030	100	M20x1.5	40	40	119	32	4	20	41	41	30	30	680

Nota: n. 1 pieza por confección

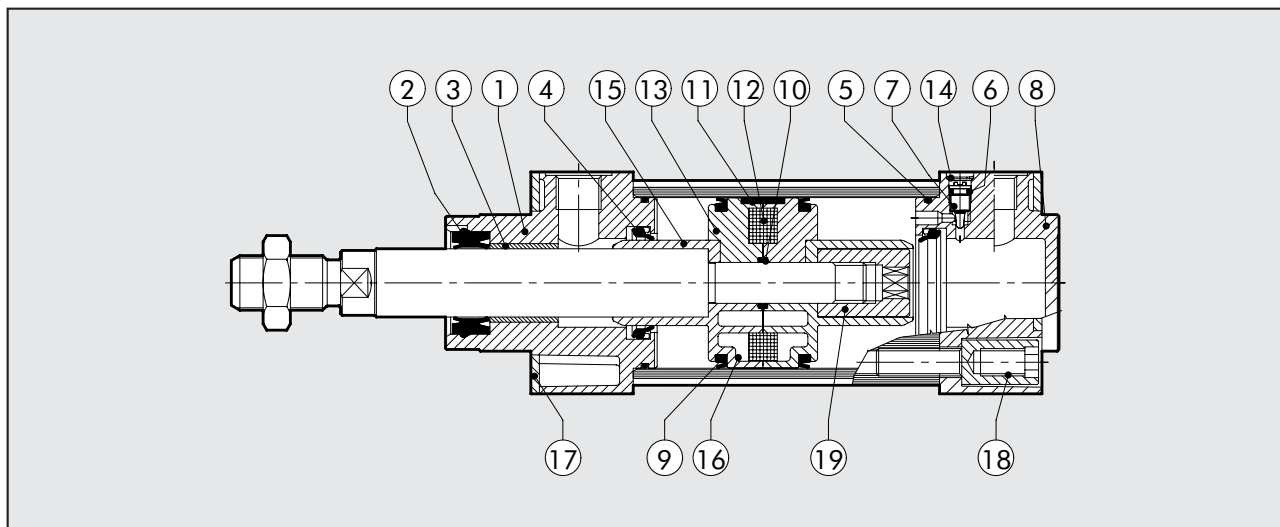
KIT MONTAJE CILINDRO TRAMITE RANURA PORTA SENSOR



Códigos	Descripción	Peso [g]
0950003001	PLACA FIJACIÓN CAVA A "T" M4	1
0950003002	PLACA FIJACIÓN CAVA A "T" M3	1

Nota: n. 1 pieza por confección

CILINDRO ISO 6431 STD Y TIPO "A" SENSOR INTEGRADO: RECAMBIOS



Tipología	Piezas	Diámetro	Código
Kit completo juntas poliuretano	2-4-5-6-9-10	Ø 32÷125	009 ... 0101
Kit completo juntas NBR	2-4-5-6-9-10	Ø 32÷125	009 ... 0502
Kit culata ant. compl. poliuretano	1-2-3-4-5-6-7-14-17-18	Ø 32÷125	009 ... 0110
Kit culata ant. compl. NBR	1-2-3-4-5-6-7-14-17-18	Ø 32÷125	009 ... 0304
Kit culata pst. compl. poliuretano	4-5-6-7-8-14-17-18	Ø 32÷125	009 ... 0111
Kit culata pst. compl. NBR	4-5-6-7-8-14-17-18	Ø 32÷125	009 ... 0305
Kit pistón completo poliuretano	9-10-16-19	Ø 32÷63	009 ... 0604
Kit pistón completo poliuretano	9-10-11-13-15-18	Ø 80÷125	009 ... 0604
Kit pistón completo NBR	9-10-16-19	Ø 32÷63	009 ... 0602
Kit pistón completo NBR	9-10-11-13-15-18	Ø 80÷125	009 ... 0602
Kit culata A + P + pistón compl. poliuretano	1-2-3-4-5-6-7-8-9-10-14-16-17-18	Ø 32÷63	009 ... 0704
Kit culata A + P + pistón compl. poliuretano	1-2-3-4-5-6-7-8-9-10-11-13-14-15-17-18	Ø 80÷125	009 ... 0704
Kit culata A + P + pistón compl. NBR	1-2-3-4-5-6-7-8-9-10-14-16-17-18	Ø 32÷63	009 ... 0702
Kit culata A + P + pistón compl. NBR	1-2-3-4-5-6-7-8-9-10-11-13-14-15-17-18	Ø 80÷125	009 ... 0702
Imanes	12	Ø 32÷125	009 ... 0800