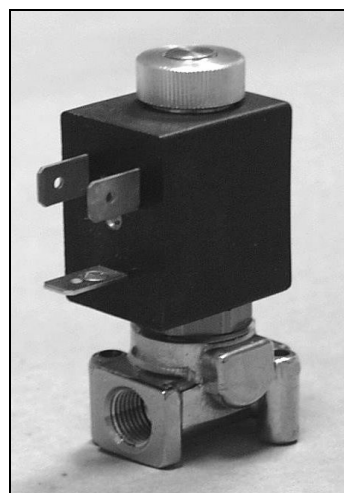


DESCRIPTION

Solenoid valve 2 way normally open direct acting poppet type

CONSTRUCTION

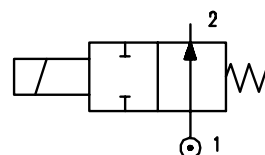
Body	Brass
Armature tube	Brass
Armature & core	Stainless steel
Spring	Stainless steel
Seal material	NBR FPM EPDM



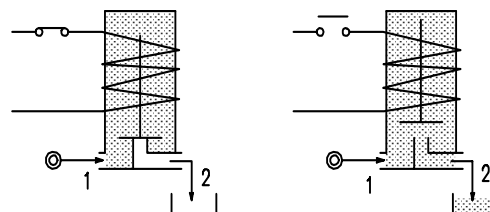
2

FEATURES

Maximum allowable pressure 50 bar
 Maximum fluid viscosity 25cSt (mm²/s)
 Ambient temperature : with class F coil -10° +55°C
 with class H coil -10°+80°C
 Universal mounting position



OPTIONS : Stainless steel armature tube
 Electroless nickel plating
 Explosion proof coil to ATEX - EExmII Type7



CODE ① ②	Connection G	Orifice mm	KV m ³ /h	Differential Pressure bar			Nominal Power			Coil		Seal ①	Temp. Range °C
				Min	Max		AC Inrush	VA Holding	DC Watt	Type	Width		
					AC	DC							
E205A.....12///.....	1/8"	1.2	0.04	0	25	25	12	8	6.5	3	22	NBR=B	-10 +90
E205A.....15///.....	1/8"	1.5	0.06	0	16	16	12	8	6.5	3	22	EPDM=E	<+140
E205A.....20///.....	1/8"	2	0.09	0	10	10	12	8	6.5	3	22		
E205A.....25///.....	1/8"	2.5	0.14	0	5.5	5.5	12	8	6.5	3	22	FPM=V	-10 +130
E205A.....31///.....	1/8"	3.1	0.19	0	3.5	3.5	12	8	6.5	3	22		

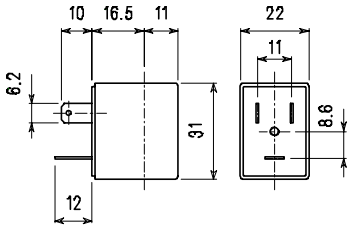
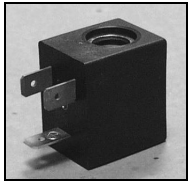
2.205.A/09 /03

- ① Seal
- ② Coil

Example E205AB20///30B NBR seal
 Coil 24V 50/60Hz

COIL	Alternating current ~50 /60Hz Volt							Direct current Volt			Electrical connection	Connector
	12	24	48	110	220 230	240	380	12	24	48		
Type 3 Width 22 Code ②	30A	30B	30C	30D	30E	30F	30G	300	301	302	DIN 46244	PG9 code 10348000

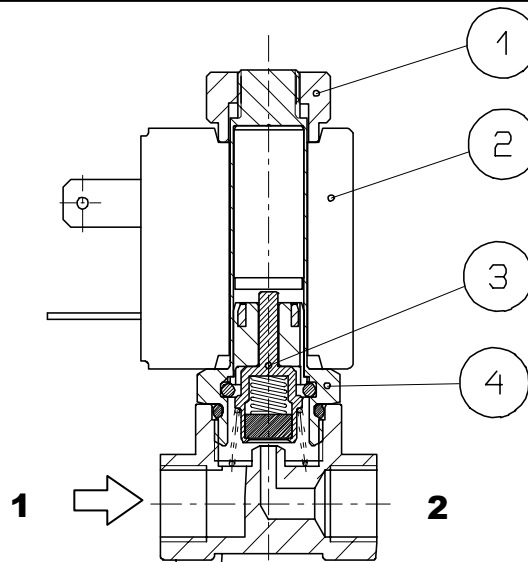
DESCRIPTION
 Class F insulation
 Voltage tolerance
 CA+15% -10%
 DC ± 10%
 Protection to IP65
 with connector fitted
 Continuous service
 ED100%
OPTIONS
 Class H insulation
 Cable attached
 Special coil voltage
 Special coil power



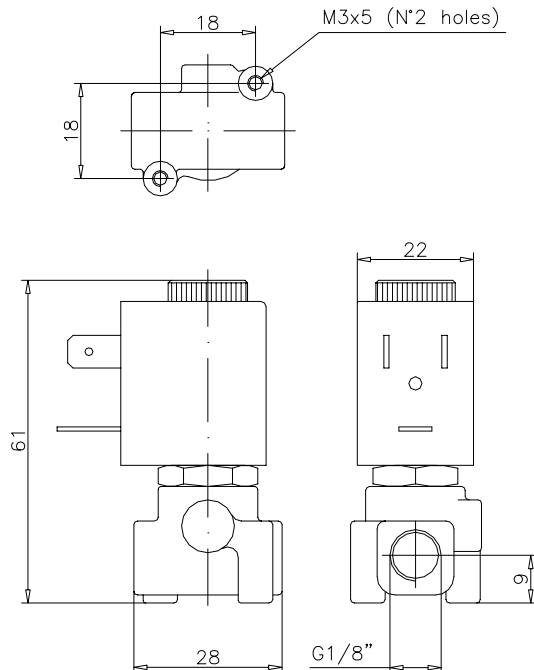
Type 3 Weight 0.05Kg

SPARE PARTS LIST

- 1.Coil fixing nut
- 2.Coil
- 3.Seal assembly
- 4.Armature assembly



OVERALL DIMENSION

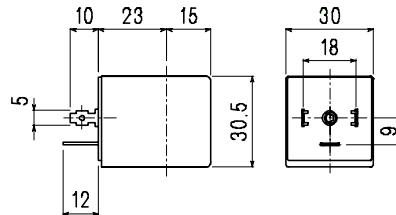
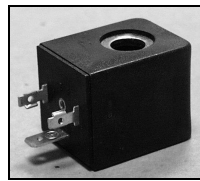
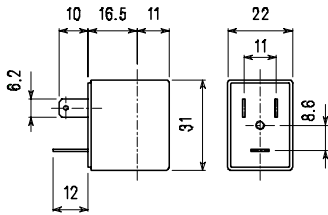
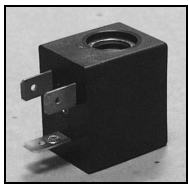


Weight 0.13 Kg

COILS	Alternating current ~50 /60Hz Volt							Direct current Volt			Electrical Connection	Connectors
	12	24	48	110	220 230	240	380	12	24	48		
Type 3 Width 22 Code ②	30A	30B	30C	30D	30E	30F	30G	300	301	302	DIN 46244	PG9 code 10348000
Type 4 Width 30 Code ②	40A	40B	40C	40D	40E	40F	40G	400	401	402	DIN 43650A	PG9 code 10349000

DESCRIPTION
 Class F insulation
 Voltage tolerance
 AC+15% -10%
 DC ± 10%
 Protection to IP65
 with connector fitted
 Continuous service
 ED100%

OPTIONS
 Class H insulation
 Cable attached
 Special coil voltages
 Special coil powers

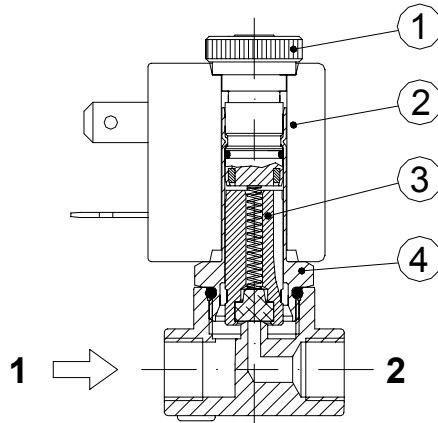


Type 3 Weight 0,5Kg

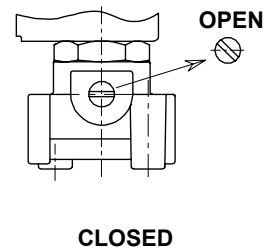
Type 4 Weight 0.1Kg

SPARE PARTS LIST

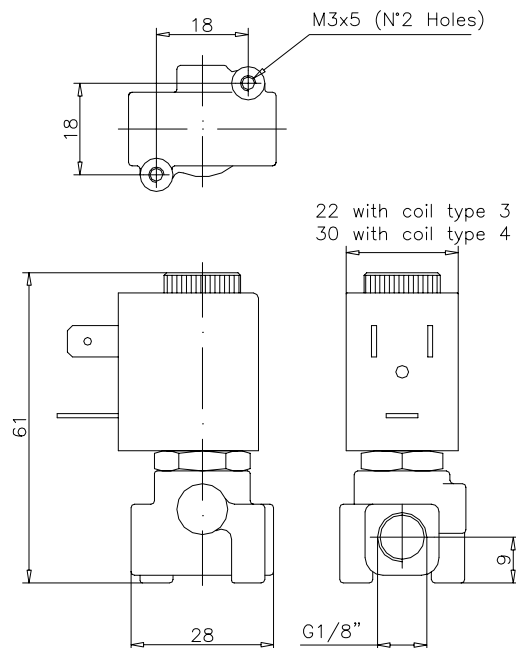
- 1.Coil fixing nut
- 2.Coil
- 3.Armature assembly
- 4.Amature tube with core



MANUAL OVERRIDE



OVERALL DIMENSION



Weight 0.13 Kg with coil type 3
 Weight 0.18 Kg with coil type 4