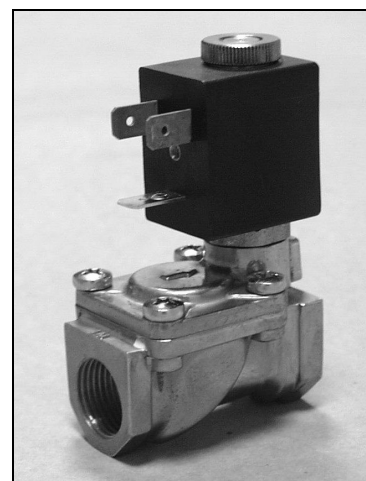


DESCRIPTION

Solenoid valve 2 way normally closed with servo-assisted diaphragm

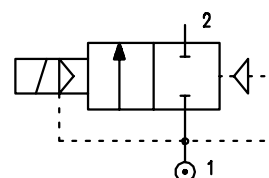
CONSTRUCTION

Body and cover	Brass
Armature tube	Stainless steel
Armature & core	Stainless steel
Springs	Stainless steel
Seal material	NBR FPM EPDM

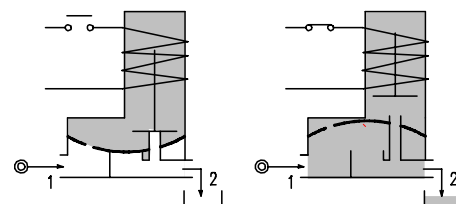


FEATURES

Minimum differential pressure 0.15 bar
 Maximum allowable pressure 25 bar
 Maximum fluid viscosity 25cSt (mm²/s)
 Ambient temperature: with class F coil -10° +55°C
 with class H coil -10°+80°C
 Preferred mounting position with vertical coil above



- OPTIONS:** Manual override
 Electroless nickel plating
 Explosion proof coil to ATEX - EExmII Type 7
 Version with speed control
 Version for vacuum applications (air/gas)
 Version for use with oxygen



Certified versions:



CODE ① ②	Connection G	Orifice mm	KV m³/h	Differential Pressure bar			Nominal Power			Coil		Seal ①	Temp. Range °C
				Min	Max		AC Inrush	VA Holding	DC Watt	Type	Width		
					AC	DC							
E107B.....10///.....	1/4"	10	1.5	0.15	15	15	12	8	6.5	3	22	NBR=B EPDM=E FPM=V	-10 +90 <+140 -10+130
E107C.....10///.....	3/8"	10	1.7	0.15	15	15	12	8	6.5	3	22		
E107C.....12///.....	3/8"	12	2	0.15	15	15	12	8	6.5	3	22		
E107D.....12///.....	1/2"	12	2.2	0.15	15	15	12	8	6.5	3	22		
E107E18///.....	3/4"	18	5.2	0.15	13	13	12	8	6.5	3	22		
E107F.....25///.....	1"	24	10.2	0.15	10	10	12	8	6.5	3	22		
E107G.....37///.....	1 1/4"	37	18	0.15	10	10	20	15	10	2	30		
E107H.....37///.....	1 1/2"	37	21	0.15	10	10	20	15	10	2	30		
E107I.....50///.....	2"	50	36	0.15	10	10	20	15	10	2	30		

4.107.A/09/03

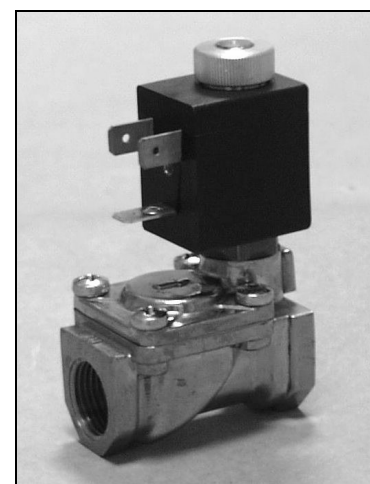
- ① Seal Example E107DB12///301 NBR seal
 ② Coil Coil 24V DC

DESCRIPTION

Solenoid valve 2way normally open with servo-assisted diaphragm.

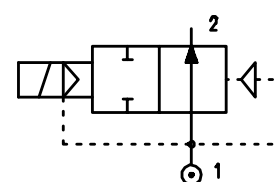
CONSTRUCTION

Body and cover	Brass
Armature tube	Brass
Armature & core	Stainless steel
Spring	Stainless steel
Seal material	NBR FPM EPDM

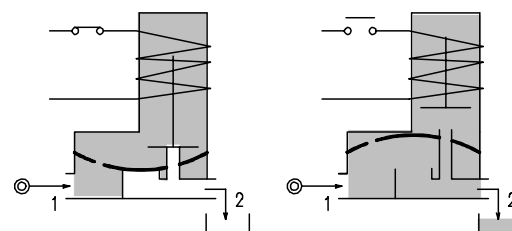


FEATURES

Minimum differential pressure 0.15 bar
 Maximum allowable pressure 25 bar
 Maximum fluid viscosity 25cSt (mm²/s)
 Ambient temperature : with class F coil -10° +55°C
 with class H coil -10°+80°C
 Preferred mounting position with vertical coil above.



OPTIONS : Electroless nickel plating
 Explosion proof coil to ATEX-EExmII Type 7
 Stainless steel armature tube



CODE ① ②	Connection G	Orifice mm	KV m ³ /h	Differential Pressure bar			Nominal Power			Coil		Seal ①	Temp. Range °C
				Min	Max		AC Inrush	VA Holding	DC Watt	Type	Width		
					AC	DC							
E207B....10///.....	1/4"	10	1.5	0.15	15	15	12	8	6.5	3	22	NBR=B	-10 +90
E207C....10///.....	3/8"	10	1.7	0.15	15	15	12	8	6.5	3	22		
E207C....12///.....	3/8"	12	2	0.15	15	15	12	8	6.5	3	22		
E207D....12///.....	1/2"	12	2.2	0.15	15	15	12	8	6.5	3	22	EPDM=E	<+140
E207E18///.....	3/4"	18	5.2	0.15	13	13	12	8	6.5	3	22		
E207F.....25///.....	1"	24	10.2	0.15	10	10	12	8	6.5	3	22	FPM=V	-10 +130
E207G.....38///.....	1 1/4"	37	18	0.15	10	10	20	15	10	2	30		
E207H.....38///.....	1 1/2"	37	21	0.15	10	10	20	15	10	2	30		
E207I.....50///.....	2"	50	36	0.15	10	10	20	15	10	2	30		

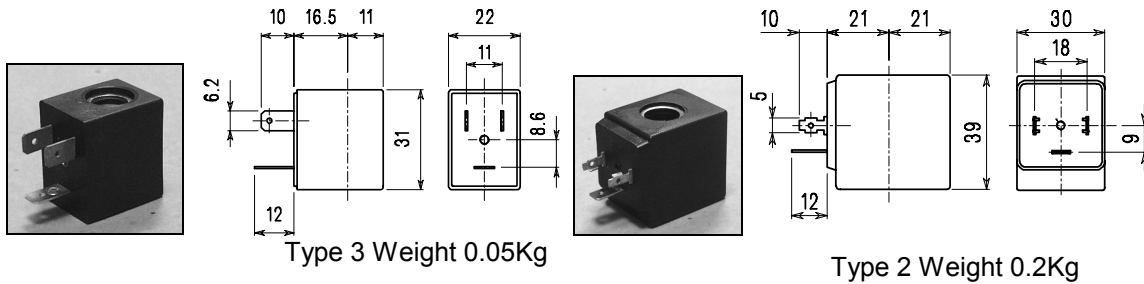
4.207.A/09/03

- ① Seal
- ② Coil

Example E207DB12///301 NBR Seal
 Coil 24V DC

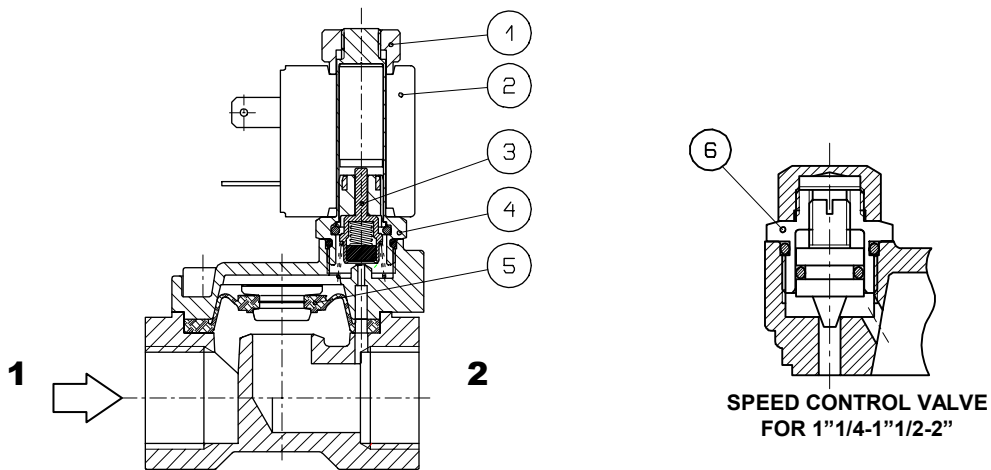
COIL	Alternating current ~50 /60Hz Volt							Direct current Volt			Electrical connection	Connectors
	12	24	48	110	220 230	240	380	12	24	48		
Type 3 Width 22 Code ②	30A	30B	30C	30D	30E	30F	30G	300	301	302	DIN 46244	PG9 code 10348000
Type 2 Width 30 Code ②	20A	20B	20C	20D	20E	20F	20G	200	201	202	DIN 43650A	PG9 code 10349000

DESCRIPTION
 Class F insulation
 Voltage tolerance
 CA+15% -10%
 DC ± 10%
 Protection to IP65
 with connector fitted
 IP00 without
 connector

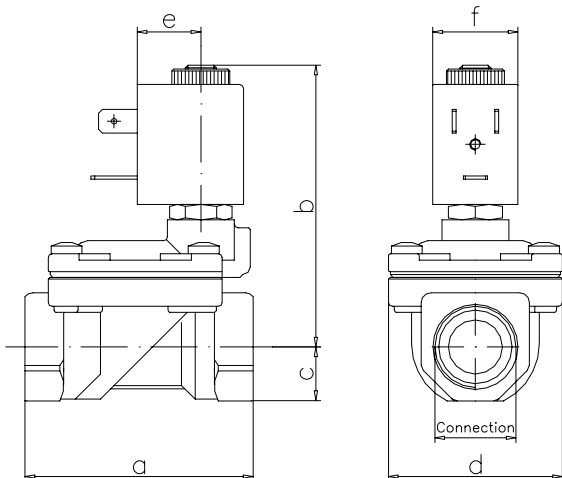


OPTIONS
 Class H insulation
 Cable attached
 Special coil voltage
 Special coil powers

- SPARE PARTSLIST**
1. Coil fixing nut
 2. Coil
 3. Seal assembly
 4. Armature tube
 5. Diaphragm assembly
 6. Speed control valve



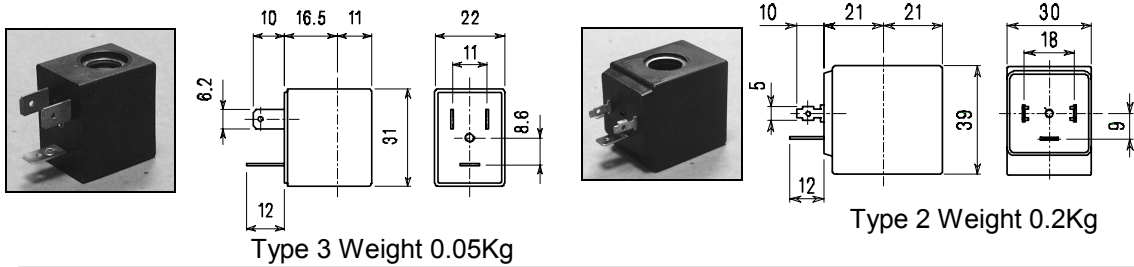
OVERALL DIMENSION



Connection	a	b	c	d	e	f	Weight kg
1/4"BSPØ10	47	67	11	32	16	22	0.25
3/8"BSPØ10	47	67	11	32	16	22	0.25
3/8"BSPØ12	60	76	14	45	16	22	0.45
1/2"BSP	60	76	14	45	16	22	0.45
3/4"BSP	75	78	18	55	16	22	0.66
1"BSP	96	88	20	72	16	22	1.20
1 1/4"BSP	144	98	28	102	21	30	3.20
1 1/2BSP	144	98	28	102	21	30	2.90
2"BSP	152	122	35	119	21	30	4.50

COILS	Alternating current ~50 /60Hz Volt							Direct current Volt			Electrical connection	Connectors
	12	24	48	110	220 230	240	380	12	24	48		
Type 3 Width 22 Code ②	30A	30B	30C	30D	30E	30F	30G	300	301	302	DIN 46244	PG9 code 10348000
Type 2 Width 30 Code ②	20A	20B	20C	20D	20E	20F	20G	200	201	202	DIN 43650A	PG9 Code 10349000

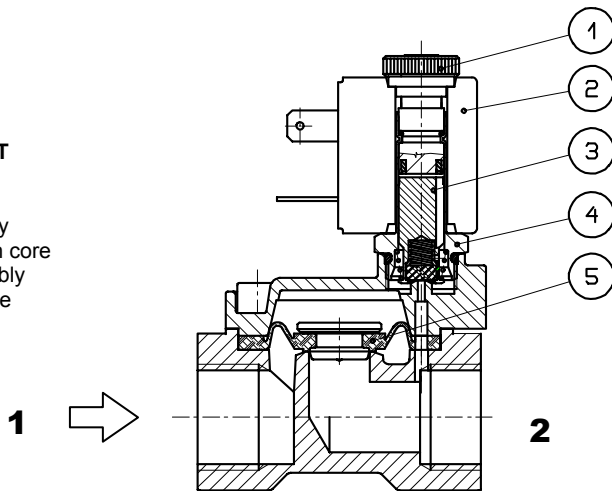
DESCRIPTION
 Class F insulation
 Voltage tolerance
 CA+15% -10%
 DC ± 10%
 Protection to IP65
 with connector fitted
 IP00 without connector



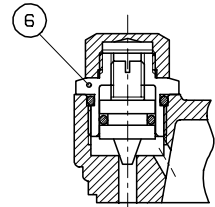
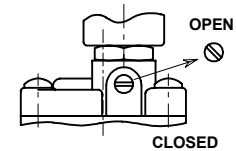
OPTIONS
 Class H insulation
 Cable attached
 Special coil voltage
 Special coil power

SPARE PARTS LIST

- 1.Coil fixing nut
- 2.Coil
- 3.Armature assembly
- 4.Armature tube with core
- 5.Diaphragm assembly
- 6.Speed control valve

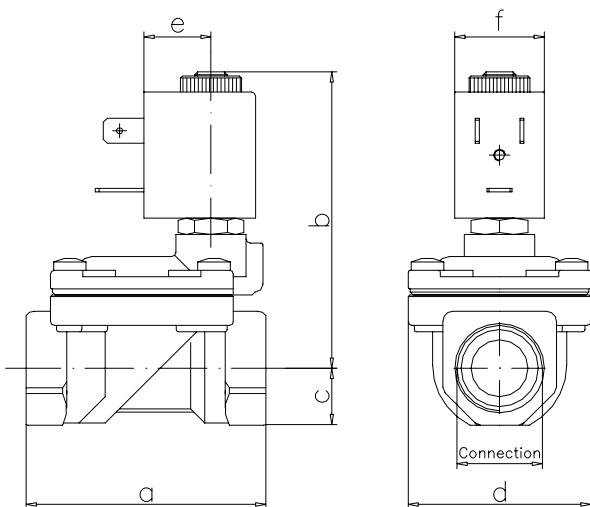


MANUAL OVERRIDE



**SPEED CONTROL VALVE
 FOR 1"1/4-1"1/2-2"**

OVERALL DIMENSION



Connection	a	b	c	d	e	f	Weight kg
1/4" BSP Ø10	47	64	11	32	16	22	0.25
3/8" BSP Ø10	47	64	11	32	16	22	0.22
3/8" BSP Ø12	60	73	14	45	16	22	0.45
1/2" BSP	60	73	14	45	16	22	0.40
3/4" BSP	75	75	18	55	16	22	0.66
1" BSP	96	85	20	72	16	22	1.20
1"1/4" BSP	144	95	28	102	45	30	3.20
1"1/2" BSP	144	95	28	102	45	30	2.90
2" BSP	152	119	35	119	45	30	4.50