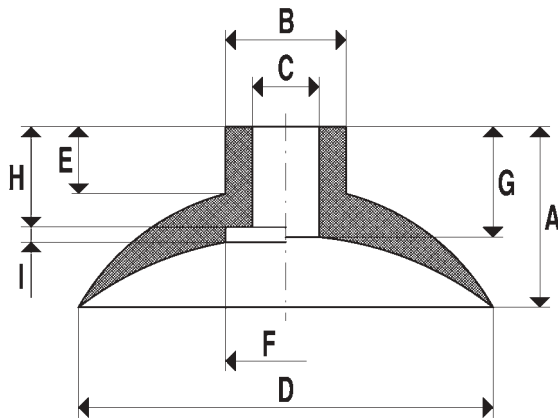


## [Cups]



Traditional cups, designed in the typical cup shape and with diameters ranging from 4 to 85 mm; they are normally made with natural para rubber with 45 Shore hardness, oil-resistant rubber with 60 Shore hardness, stabilized silicone with 45 Shore hardness and, upon request, with special compounds which are able to withstand extremely high temperatures or corrosive fluids.

Art.	Force Kg.	A	B Ø	C Ø	D Ø	E	F Ø	G	H	I
01 04 10	0.03	7.5	3	1.5	4	6.0	--	7.0	--	--
01 05 10	0.05	8.0	3	1.5	5	6.0	--	7.0	--	--
01 06 10	0.07	8.0	3	1.5	6	6.0	--	7.0	--	--
01 08 10	0.12	8.0	5	2.5	8	6.0	--	7.0	--	--
01 09 07	0.15	7.0	5	2.0	9	5.5	--	6.0	--	--
01 10 10	0.19	11.0	7	4.0	10	8.5	--	7.0	--	--
01 12 10	0.28	11.0	8	4.0	12	8.0	--	9.0	--	--
01 15 10	0.44	12.0	8	4.0	15	8.0	--	9.5	--	--
01 18 10	0.63	12.0	8	4.0	18	8.0	--	9.5	--	--
01 20 10	0.78	12.0	8	4.0	20	8.0	--	9.5	--	--
01 22 10	0.95	13.0	8	4.0	22	8.0	--	10.0	--	--
01 25 10	1.23	8.0	12	6.0	25	2.0	--	3.5	--	--
01 25 15	1.23	16.0	12	6.0	25	10.0	--	11.5	--	--
01 30 10	1.76	8.0	12	6.0	30	1.0	--	3.5	--	--
01 30 15	1.76	17.0	12	6.0	30	10.0	--	12.5	--	--
01 35 10	2.40	8.0	12	6.0	35	1.0	--	3.5	--	--
01 35 15	2.40	16.0	15	10.0	35	10.0	--	11.5	--	--
01 40 15	3.14	18.0	15	10.0	40	10.0	--	12.5	--	--
01 45 10	3.98	18.0	15	10.0	45	5.0	--	9.5	--	--
01 45 15	3.98	23.0	15	10.0	45	10.0	--	14.5	--	--
01 60 10	7.06	22.0	15	10.0	60	4.0	25	--	10	2.5
01 85 10	14.18	41.0	25	15.0	85	16.0	25	--	23	4.0