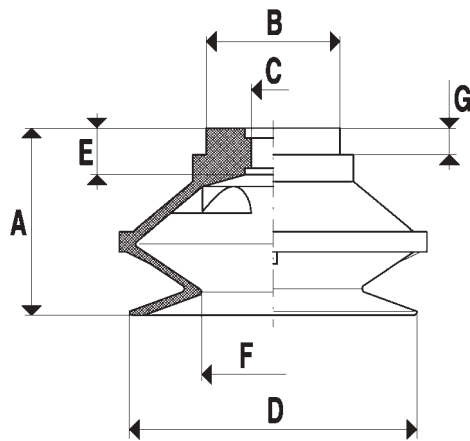


## [Bellows cups]



The particular shape of the bellows cup makes them collapse rapidly when they are in contact with the surface of the load to be handled, lifting the load some centimetres, independently of the machine movement; this quick movement prevents the load below from remaining stuck to the surfaces or load underneath.

Due to this feature, bellows cups are recommended in all the cases where it is necessary to lift and handle paper sheets, cardboard sheets, thin plates, wooden panels, glass slabs, etc.

Due to their high flexibility, they can also be used to compensate flatness errors or for the grip on inclined surfaces.

These cups are available in all the series of compounds.

Art.	Force Kg.	A	B Ø	C Ø	D Ø	E	F Ø	G
01 22 19	0.95	19	14.5	5	22	5.5	11	4
01 34 26	2.26	26	14.5	5	34	5.5	17	4
01 43 28	3.62	28	20	6.5	43	7	21.5	4
01 53 35	5.51	35	27	10.5	53	9.5	30.5	6